

SERVICE & OPERATING MANUAL

Original Instructions

ACCESSORIES

*AC Solenoid Kits
designed for use with
the Warren Rupp Stroke
Counter/Batch Controller,
Warren Rupp Pulse
Output Interface Kits,
and customer-supplied
VAC controllers (PLCs).*

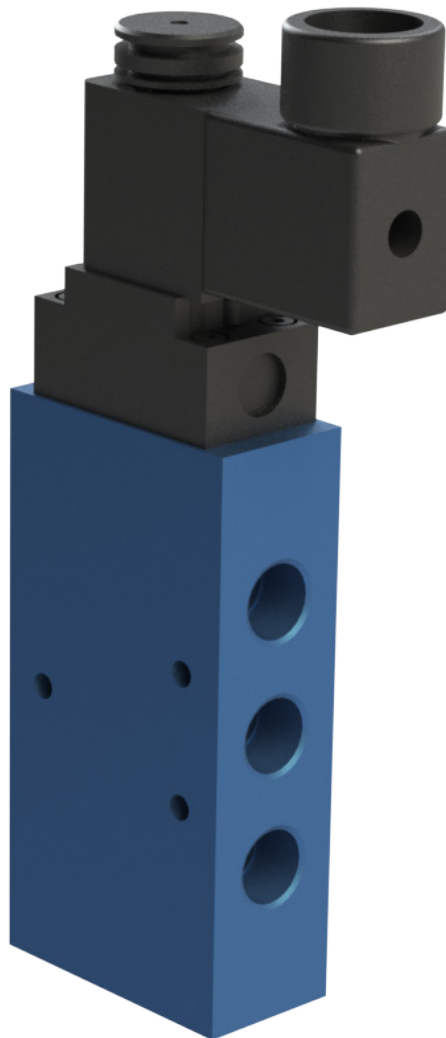
*DC Solenoid Kits
designed for use with
customer-supplied VDC
controllers ONLY (PLCs).*

Warren Rupp, Inc.
A Unit of IDEX Corporation
800 N. Main St.,
Mansfield, Ohio 44902 USA
Telephone (419) 524.8388
Fax (419) 522.7867
WWW.SANDPIPERPUMP.COM



© Copyright 2024 Warren Rupp, Inc.
All rights reserved

Solenoid Valves



SANDPIPER®
A WARREN RUPP, INC. BRAND

WWW.SANDPIPERPUMP.COM

Solenoid Valves

Solenoid Kit Selection

Before installing the Solenoid Kit, make certain it is compatible with your specific pump model and voltage.

AC Solenoids

AC Solenoid Kits designed for use with the Warren Rupp Stroke Counter/Batch Controller, Warren Rupp Pulse Output Interface Kits, and customer-supplied VAC controllers (PLCs).

Kit 894.001.000

110/120 VAC Solenoid

Kit 894.002.000

220/240 VAC Solenoid

Kit 894.005.000

110/120 VAC Solenoid

Kit 894.006.000

220/240 VAC Solenoid

Kit 894.009.000

110/120 VAC Solenoid

Kit 894.010.000

220/240 VAC Solenoid

DC Solenoids

DC Solenoid Kits designed for use with customer-supplied VDC controllers ONLY (PLCs).

Kit 894.003.000

12 VDC Solenoid

Kit 894.004.000

24 VDC Solenoid

Kit 894.008.000

24 VDC Solenoid

Kit 894.011.000

12 VDC Solenoid

Kit 894.012.000

24 VDC Solenoid

Operating Principle

The interfaceable solenoid kits offer easy on/off operation of air-driven diaphragm pumps, via the pump air inlet.

All AC solenoid units can be used with the Warren Rupp Batch Control/Stroke Counters, Warren Rupp Pulse Output Interface Kits, or customer-supplied VAC controls. DC kits are designed for use with customer-supplied VDC controls only.

Before Installation

Before installing the Solenoid Kit, make certain it is compatible with your specific pump model and system voltage.

Solenoid Kit Repair Parts

Kit 894.001.000

110/120 VAC Solenoid · Kit includes:

Part No.	Description	Qty
893.085.000	Valve (includes knurled nut)	1
219.002.000	Coil	1
241.001.000	Connector	1
541.001.000	Nut, Knurled	1

Kit 894.002.000

220/240 VAC Solenoid · Kit includes:

Part No.	Description	Qty
893.085.000	Valve (includes knurled nut)	1
219.003.000	Coil	1
241.001.000	Connector	1
541.001.000	Nut, Knurled	1

Kit 894.003.000

12VDC Solenoid · Kit includes:

Part No.	Description	Qty
893.085.000	Valve (includes knurled nut)	1
219.004.000	Coil	1
241.001.000	Connector	1
541.001.000	Nut, Knurled	1

Kit 894.004.000

24VDC Solenoid · Kit includes:

Part No.	Description	Qty
893.085.000	Valve (includes knurled nut)	1
219.001.000	Coil	1
241.001.000	Connector	1
541.001.000	Nut, Knurled	1

Kit 894.005.000

110/120 VAC Solenoid · Kit includes:

Part No.	Description	Qty
893.086.000	Valve (includes knurled nut)	1
219.002.000	Coil	1
241.001.000	Connector	1
541.001.000	Nut, Knurled	1

Kit 894.006.000

220/240 VAC Solenoid · Kit includes:

Part No.	Description	Qty
893.086.000	Valve (includes knurled nut)	1
219.003.000	Coil	1
241.001.000	Connector	1
541.001.000	Nut, Knurled	1

Kit 894.008.000

24VDC Solenoid · Kit includes:

Part No.	Description	Qty
893.086.000	Valve (includes knurled nut)	1
219.001.000	Coil	1
241.001.000	Connector	1
541.001.000	Nut, Knurled	1

All parts available in kit form, or individually.

Solenoid Kit Selection

Before installing the Solenoid Kit, make certain it is compatible with your specific pump model and voltage.

894.001.000 · 894.002.000

894.003.000 · 894.004.000

Fit pump models:

PB¼-A	S05	S07
S07-T	S10	F05

894.005.000 · 894.006.000

894.008.000

Fit pump models:

SE½-A	SB1	SB25
ST1	ST25	S1F
SPE10	F10	

Solenoid Kit Repair Parts

Kit 894.009.000

110/120 VAC Solenoid · Kit includes:

Part No.	Description	Qty
893.087.000	Valve (includes knurled nut)	1
219.002.000	Coil	1
241.001.000	Connector	1
541.001.000	Nut, Knurled	1

Kit 894.010.000

220/240 VAC Solenoid · Kit includes:

Part No.	Description	Qty
893.087.000	Valve (includes knurled nut)	1
219.003.000	Coil	1
241.001.000	Connector	1
541.001.000	Nut, Knurled	1

Kit 894.011.000

12DC Solenoid · Kit includes:

Part No.	Description	Qty
893.087.000	Valve (includes knurled nut)	1
219.004.000	Coil	1
241.001.000	Connector	1
541.001.000	Nut, Knurled	1

Kit 894.012.000

24VDC Solenoid · Kit includes:

Part No.	Description	Qty
893.087.000	Valve (includes knurled nut)	1
219.001.000	Coil	1
241.001.000	Connector	1
541.001.000	Nut, Knurled	1

All parts available in kit form, or individually.

Solenoid Kit Selection

Before installing the Solenoid Kit, make certain it is compatible with your specific pump model and voltage.

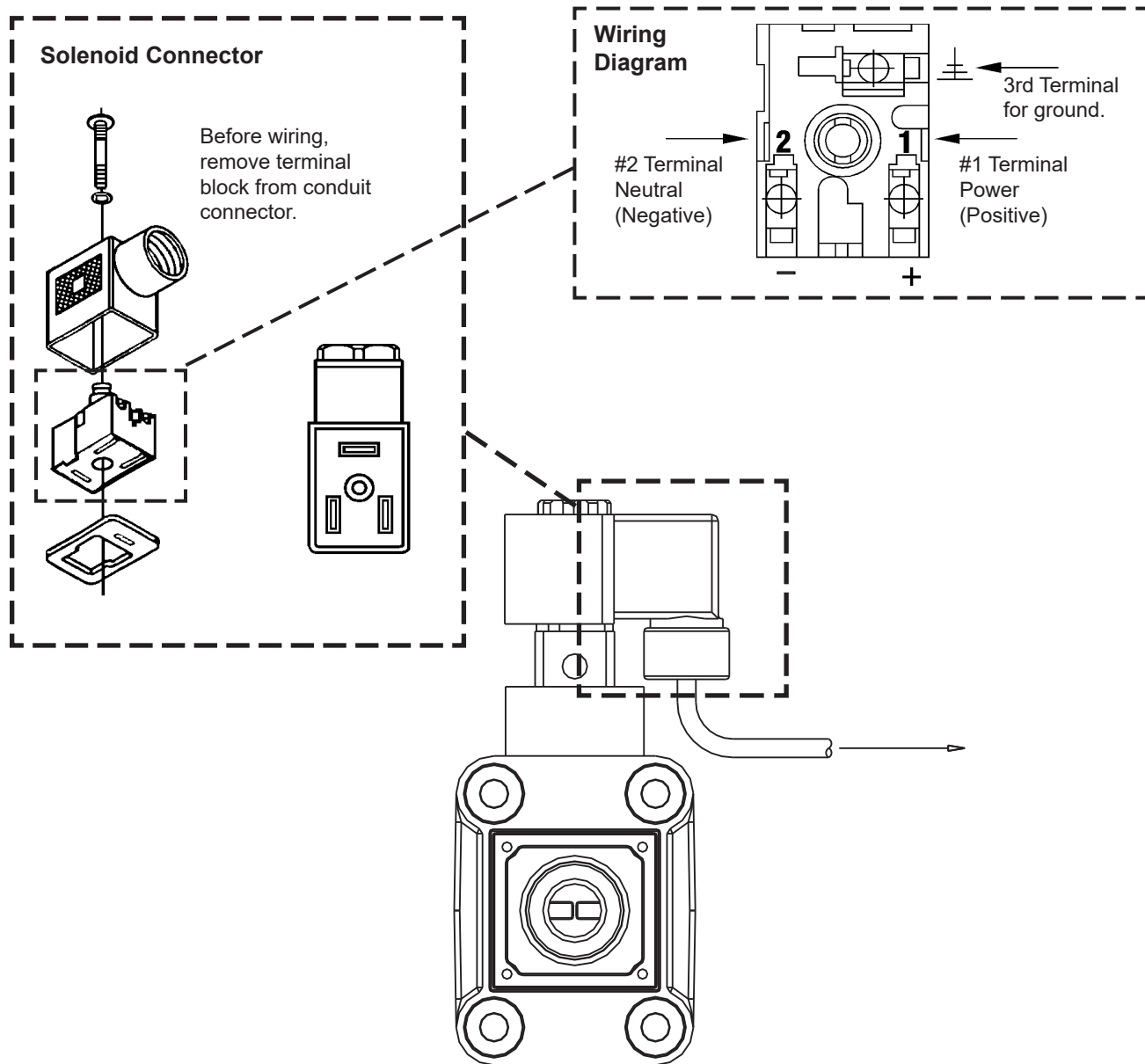
894.009.000 · 894.010.000

894.011.000 · 894.012.000

Fit pump models:

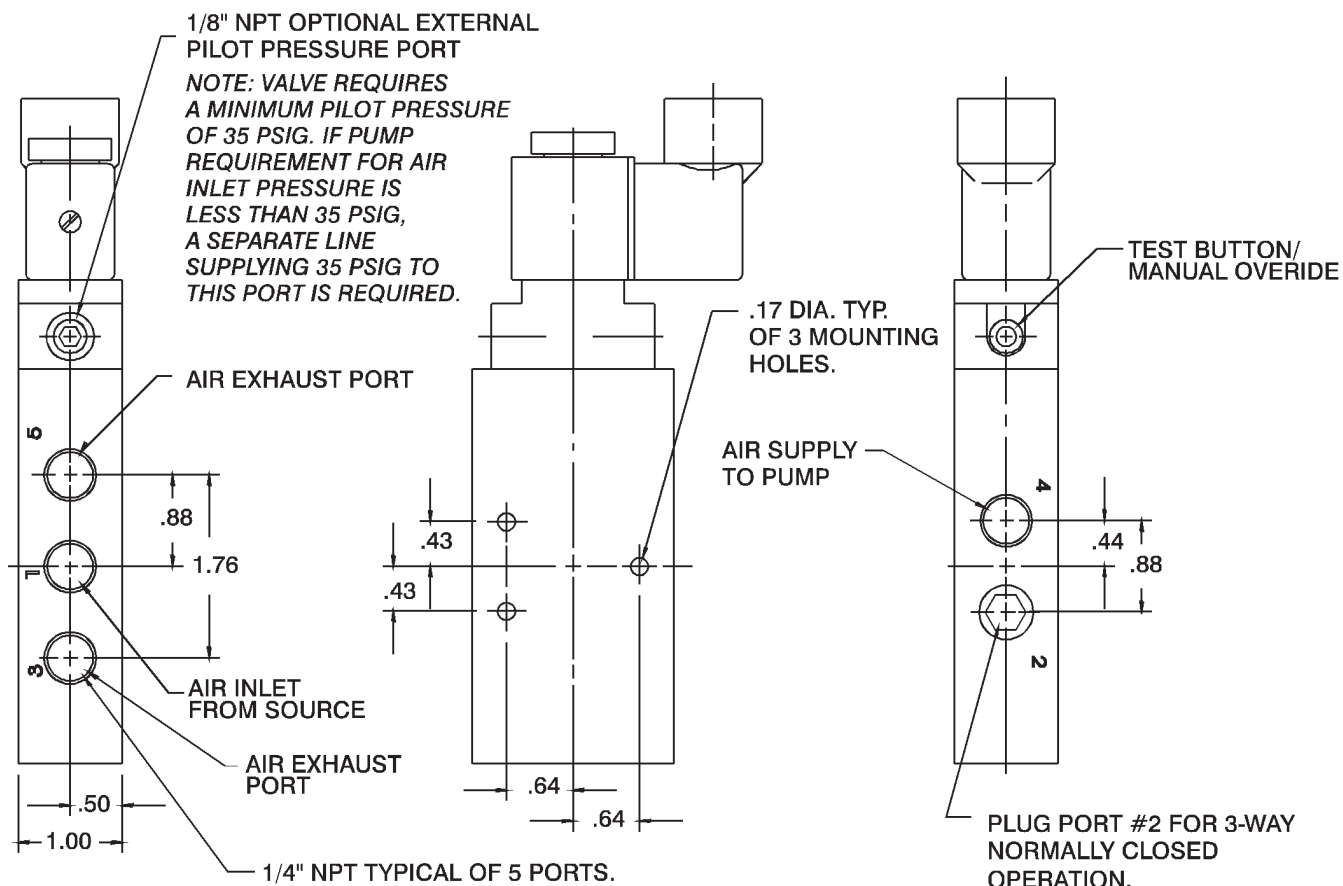
S15	HDB1½	HDB40
F15	S20	F20
HDB2	HDB50	HDF2
HDF50	S30	F30
HDB3	HDF3A	HDF3M
HDF4A	HDF4M	

Solenoid Wiring Diagram



Solenoid Valves

894.001.000
894.002.000
894.003.000
894.004.000



These instructions are for use with the following valve assemblies:

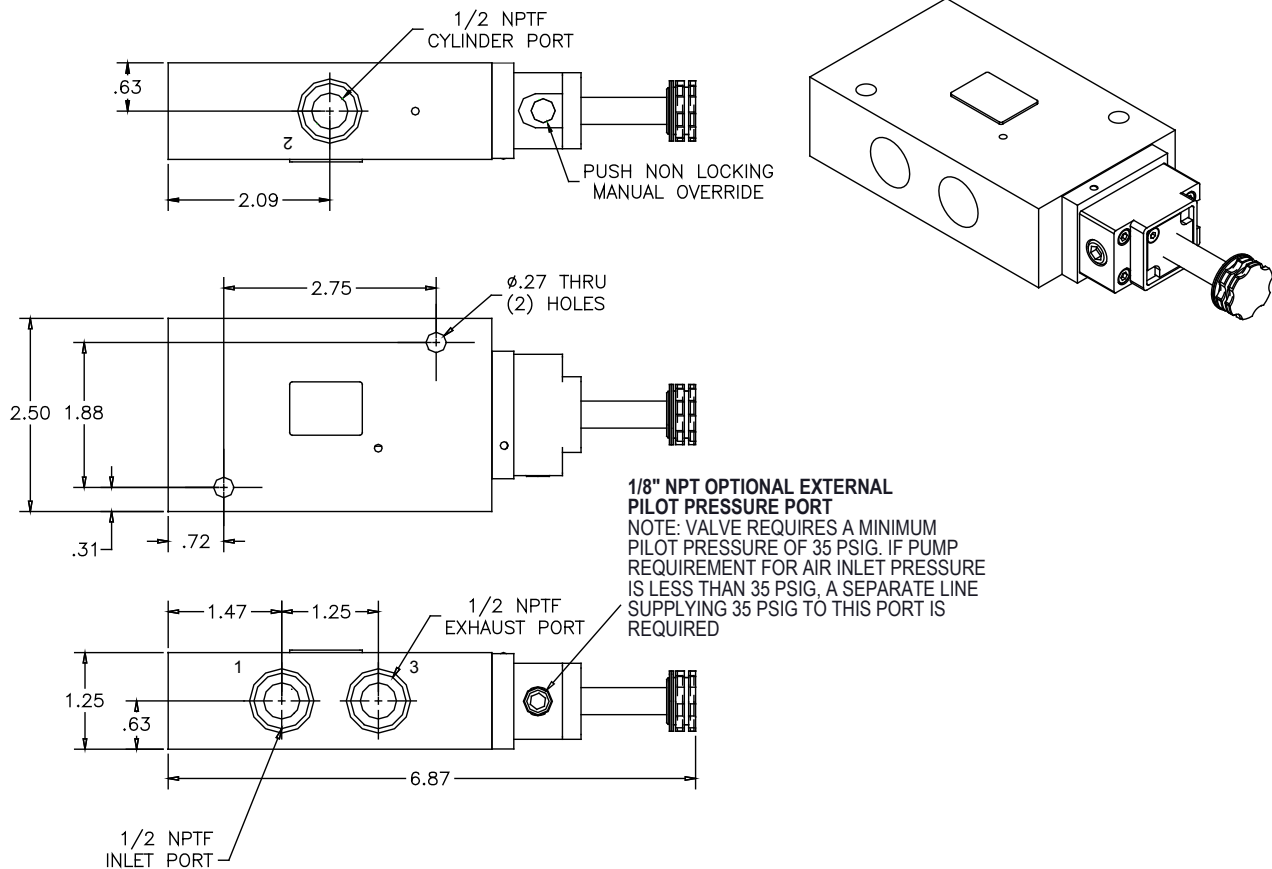
894.001.000	120VAC Solenoid Coil
894.002.000	230VAC Solenoid Coil
894.003.000	12VDC Solenoid Coil
894.004.000	24VAC Solenoid Coil

Solenoid Valves

894.005.000

894.006.000

894.008.000

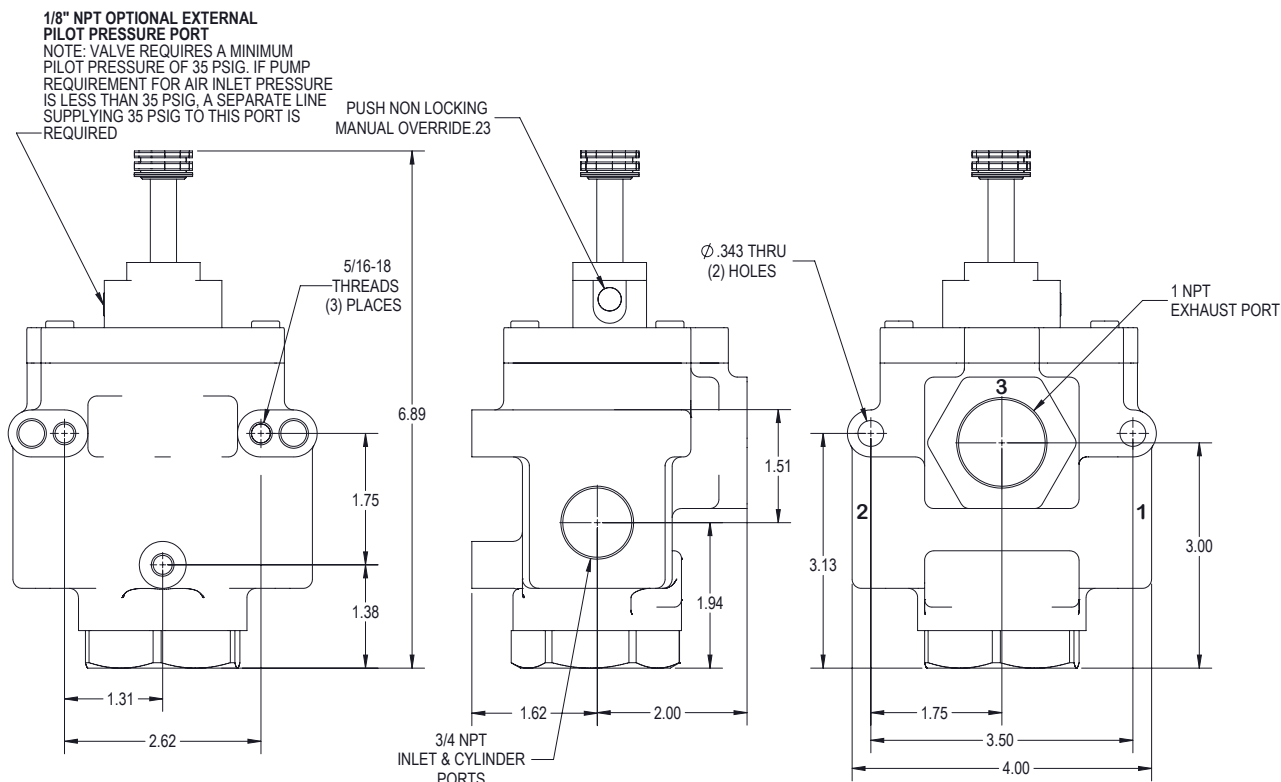


These instructions are for use with the following valve assemblies:

894.005.000	120VAC Solenoid Coil
894.006.000	230VAC Solenoid Coil
894.008.000	24VAC Solenoid Coil

Solenoid Valves

894.009.000
894.010.000
894.011.000
894.012.000



PORT	SIZE	FUNCTION
1	3/4" NPT	AIR INLET
2	3/4" NPT	AIR SUPPLY TO PUMP
3	1" NPT	EXHAUST

These instructions are for use with the following valve assemblies:

894.009.000	120VAC Solenoid Coil
894.010.000	230VAC Solenoid Coil
894.011.000	12VDC Solenoid Coil
894.012.000	24VAC Solenoid Coil