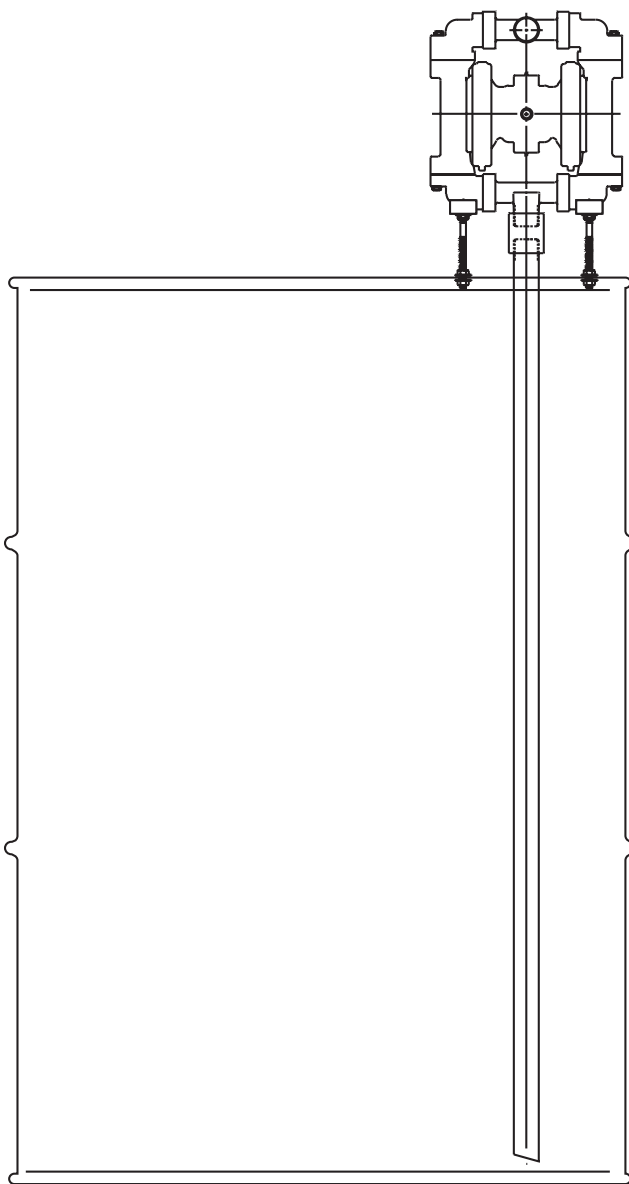


SERVICE & OPERATING MANUAL

Original Instructions

55 Gallon Drum Adaptor Kit - 031.091.555

Fits 1/4" and 1/2" pump models



Warren Rupp, Inc.
A Unit of IDEX Corporation
800 N. Main St.,
Mansfield, Ohio 44902 USA
Telephone (419) 524.8388
Fax (419) 522.7867
SANDPIPERPUMP.COM



©2017 Warren Rupp, Inc.

SANDPIPER®
A WARREN RUPP, INC. BRAND
SANDPIPERPUMP.COM

1: PUMP SPECS

2: INSTAL & OP

3: EXP VIEW

4: AIR END

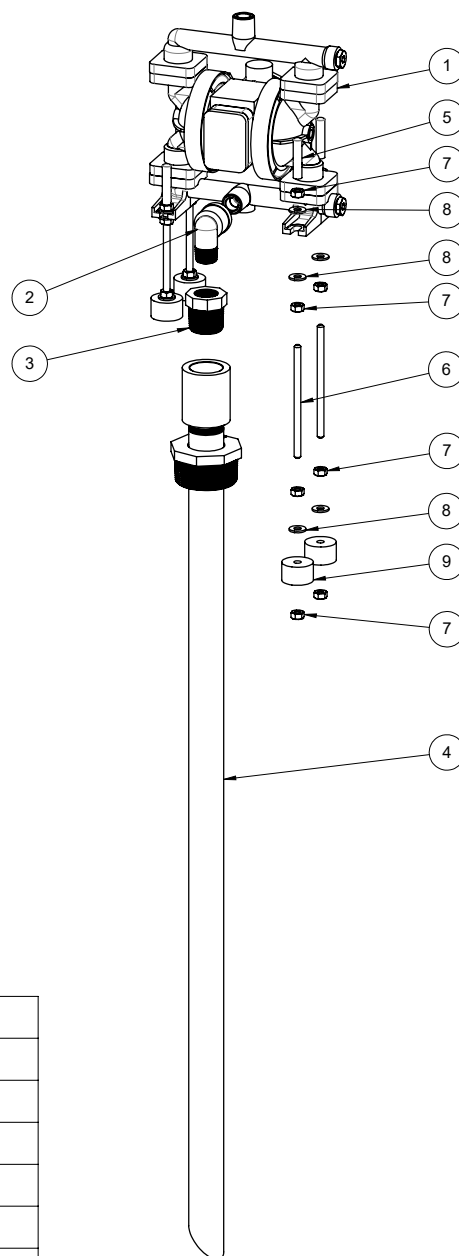
5: WET END

6: OPTIONAL

7: WARRANTY

PB 1/4 (1/4" pump)

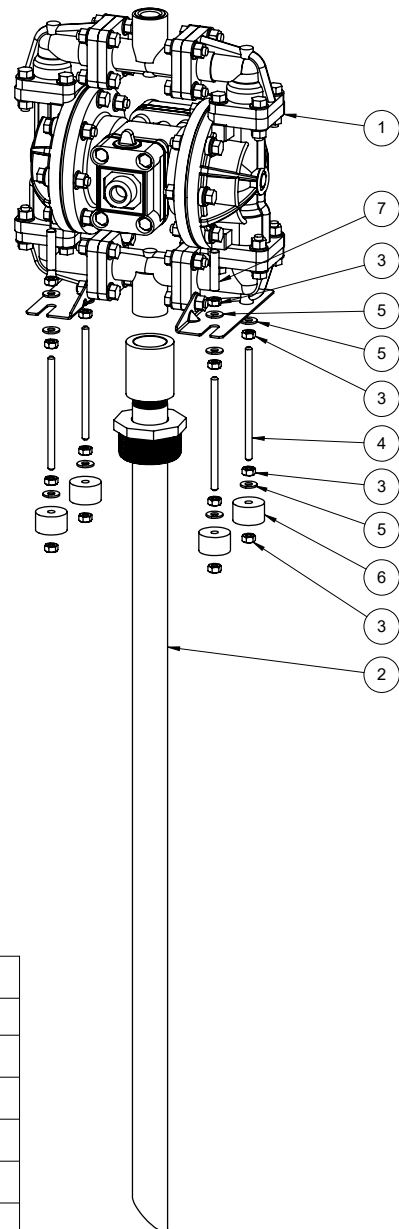
1. Apply PTFE tape to all thread joints to seal the connection with the manifold and pipe assembly.
2. The adaptor kit includes a 312.136.555 1/2" 90° elbow to connect to the suction manifold.
3. Install the 132.021.555 bushing reducer and 595-001-555 pipe assembly to the NPT nipple.
4. Remove the larger bung plug from the drum and slowly lower the pump and pipe into the barrel until the pipe bottoms out on the drum. Snug the locknut on the pipe assembly.
5. Install the four (4) foot assemblies on the pump's suction elbows, using one 545.003.115 nut and 901.035.115 5/8" washer on both the top and bottom of the foot bracket. Adjust the height of the foot assemblies, until the rubber portion of the foot puts a slight amount of pressure on the drum. This will help stabilize the pump.
6. Tighten the locknut on the pipe.



ITEM NO.	PART NUMBER	DESCRIPTION	QTY.
1	PB 1/4	PB 1/4	1
2	312.136.555	ELBOW, 90 1/2"	1
3	132.021.555	BUSHING, REDUCER	1
4	595.001.555	PIPE ASSEMBLY	1
5	165.094.556	CAP, PROTECTIVE	4
6	807.084.115	STUD, 1/4-20 X 4.50	4
7	545.003.115	NUT, HEX, 1/4-20	16
8	901.035.115	WASHER, FLAT, 1/4	12
9	350.002.360	FOOT, RUBBER	4

S05 (1/2" pump)

1. Apply PTFE tape to all thread joints to seal the connection with the manifold and pipe assembly.
2. The adaptor kit includes a 312.136.555 1/2" 90° elbow and 538.120.555 1/2" NPT nipple to connect to the suction manifold.
3. Install the 132.021.555 bushing reducer and 595-001-555 pipe assembly to the NPT nipple.
4. Remove the larger bung plug from the drum and slowly lower the pump and pipe into the barrel until the pipe bottoms out on the drum. Snug the locknut on the pipe assembly.
5. Install the four (4) foot assemblies to the pump's mounting bracket using one 545.003.115 nut and 901.053.110 1" washer on both the top and bottom foot bracket. Adjust the height of the foot assemblies, until the rubber portion of the foot puts a slight amount of pressure on the drum. This will help stabilize the pump.
6. Tighten the locknut on the pipe.



ITEM NO.	PART NUMBER	DESCRIPTION	QTY.
1	S05B2XXXXXXXXXX	S05 NON-METALLIC, VERTICAL SUCTION	1
2	595.001.555	PIPE ASSEMBLY	1
3	545.003.115	NUT, HEX, 1/4-20	16
4	807.084.115	STUD, 1/4-20 X 4.50	4
5	901.035.115	WASHER, FLAT, 1/4	12
6	350.002.360	FOOT, RUBBER	4
7	165.094.556	CAP, PROTECTIVE	4