

MINING PUMPS

BELOW & ABOVE GROUND

The Leader in Solids-Handling Air-Operated Double Diaphragms Pumps for Mining Since 1965



- ✓ Safe and Portable
- ✓ Superior Solids Handling
- ✓ Durable by Design

IDEX

SANDPIPER®
A WARREN RUPP, INC. BRAND | SANDPIPERPUMP.COM

THE SANDPIPER ADVANTAGE

EXCLUSIVE PUMP DESIGNS DELIVERING SOLUTIONS FOR MINING SINCE 1965

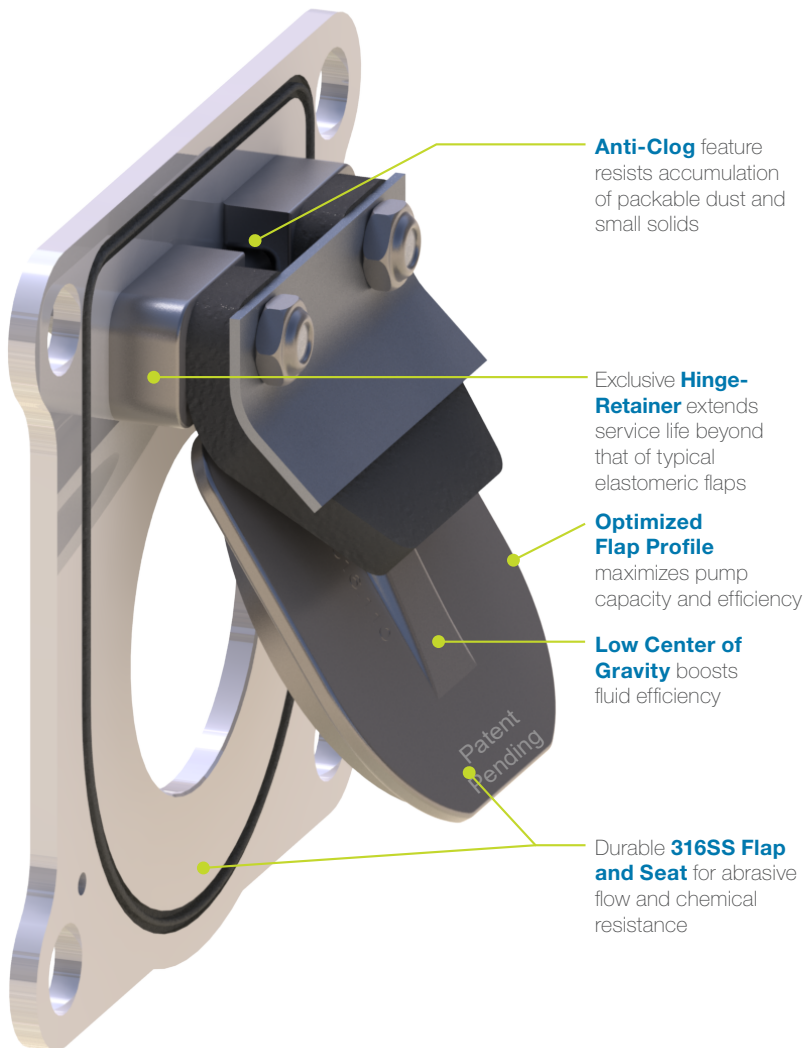
	DESIGN FEATURES AND BENEFITS	TARGET MINING APPLICATIONS
 <p>STANDARD DUTY BALL (SDB) (Ideal for Clean Fluid, Smaller Solids and Light Slurries)</p>	<ul style="list-style-type: none"> • Dry primes up to 20' (6.9m) of water • Wide range of chemical resistant material options • Solids range +.3" (1mm) to .71" (18mm) • Easily portable 	<ul style="list-style-type: none"> • Mine Dewatering - Clear fluid to small solids • Ore Processing - Leaching/ winnowing and chemical transfer • Wastewater Treatment – Filter / Belt press feed • Equipment Maintenance Fluids – Lubrications, coolant, hydraulics, transmission, and other 
 <p>HEAVY DUTY FLAP (HDF) (Ideal for Large Solids / Heavy Slurries)</p>	<ul style="list-style-type: none"> • Semi-solids passage up to 3" (76mm) • Top suction and bottom discharge to handle settling solids • Light-weight and portable non-metallic models available • Superior lift to 24 ft. (7.31 m) • Robust wetted castings for longevity • Easy access to flaps for inspection and repair 	<p>Mine Dewatering – From water to large solids / Heavy slurries (Drift, Face, and Roadway)</p> 
 <p>HEAVY DUTY BALL (HDB) (Ideal for Settling Solids / Heavy Slurries)</p>	<ul style="list-style-type: none"> • Down ported to handle settling solids • Weighted check balls to cut through viscous fluids for greater flow and efficiency • Thick casting walls for longevity • Diaphragm wear pads extend diaphragm life by reducing wear between the outer plates and diaphragms 	<ul style="list-style-type: none"> • Wastewater Treatment – Filter / Belt pressfeed (Abrasive / heavy fluids) • Concrete transfer for roof shoring 

FEATURES & BENEFITS



BEAST

DESIGNED TO HANDLE PACKABLE DUST, SMALL SOLIDS, SLURRIES, AND LARGE SOLIDS



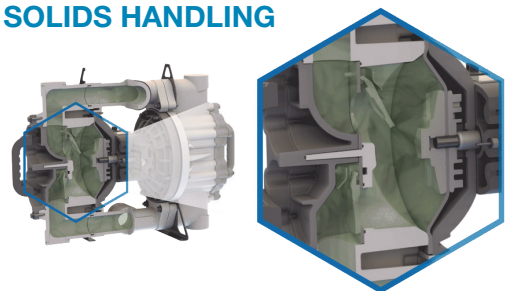
THE 2" BEAST HEAVY DUTY FLAP PUMP – FEATURES & BENEFITS

- ✓ **Multiple Material Options**
Aluminum, Cast Iron, Stainless steel, and Polypropylene.
- ✓ **Thick, Robust Wetted Castings**
For enhanced abrasion resistance.
- ✓ **Top Suction / Bottom Discharge**
For easy passage of setting solids.
- ✓ **Best in Class Efficiency**
Lowest air consumption in its class.

ADDITIONAL FEATURES NON-METALLIC

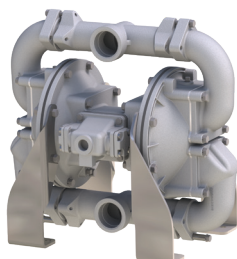
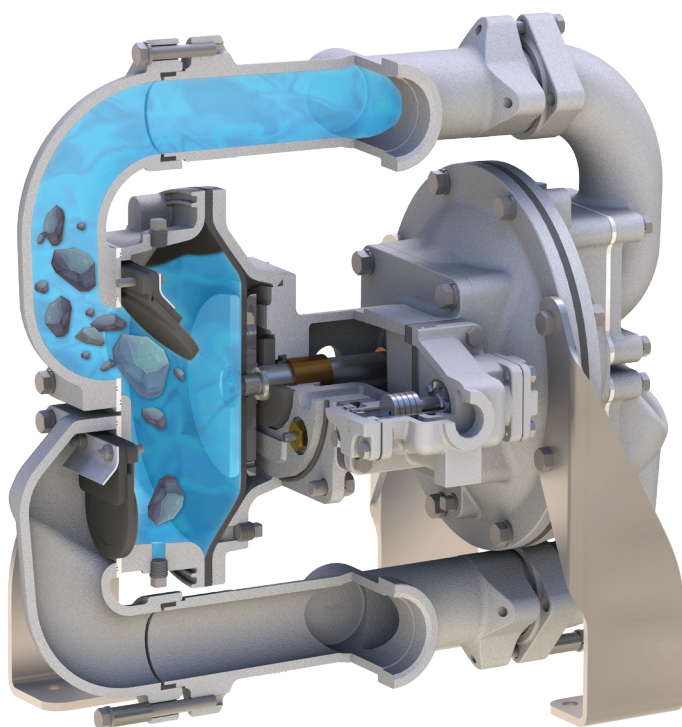
- ✓ **Only 58 lbs. (27 KG)**
For easy mobility and worker safety
- ✓ **Clean-Out Caps**
For fast, simple maintenance or inspection without pump disassembly
- ✓ **Ergonomic Handles**
Can be positions horizontally or vertically
- ✓ **Fluid connection Options**
Either FNPT or ANSI/DIN flange

SOLIDS HANDLING

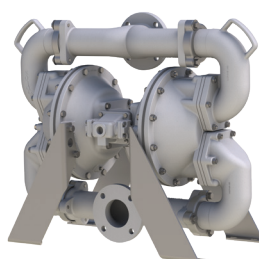


FLAP VALVE MINING PUMPS-METALLIC

HEAVY DUTY AODD VALVE PUMPS FOR MINING APPLICATIONS



HDF2 2" (50mm)



HDF3 3" (76mm)

FEATURES & BENEFITS

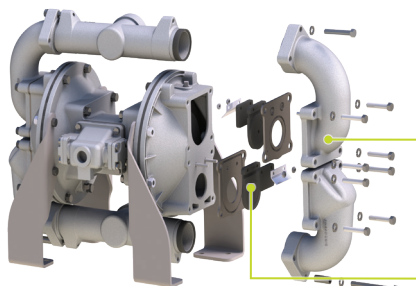
- ✓ **Flap Valve Construction**
Can pass up to line size solids, enabling higher suction lift.
- ✓ **Thick Manifold & Chamber Walls**
Greater wear resistance when pumping solids and solid laden slurries, providing extended service life.
- ✓ **Top Suction, Bottom Discharge Porting**
Easier evacuation of fluids containing large solids and settling materials.
- ✓ **Dynamic Manifold Connections**
Allow suction and discharge manifolds to be positioned in various directions.

FOCUSED APPLICATIONS

- Dewatering
- Settling Solids / Tailing Pond Transfer
- Filter / Belt Press Feed

SIGNATURE CONFIGURATIONS		HEAVY DUTY FLAP VALVE (METALLIC)
SPECIFICATIONS	Suction / Discharge Port Sizes	1" through 4"
	Max Flow Rate Per Minute	310 Gal. (1,173 L)
	Max Discharge Head	289' (88m) of water @ 125 psi
	Max Dry Prime	24' (7m)
	Max Solids Handling (Semi Solid)	3" (75 mm)
	Wetted Materials (Body)	AL, CI, SS

EASE OF MAINTENANCE METALLIC PUMPS



Quick Access to Serviceable Components

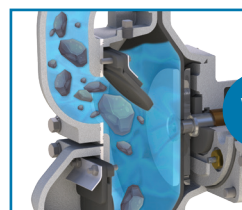
To help increase productivity and reduce downtime.

Removable Elbows

By removing the bolts that secure the elbows, it allows access to clear simple clogs without disassembling the entire pump.

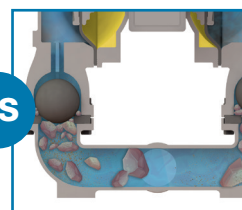
Flap Check Valves

With the elbows removed, the flap valves can be inspected and/or replaced as needed.



SANDPIPER HEAVY DUTY FLAP VALVE

Large solids easily pass through pump

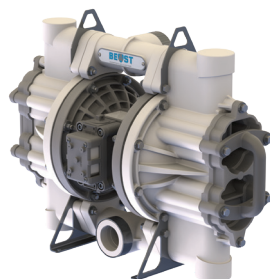
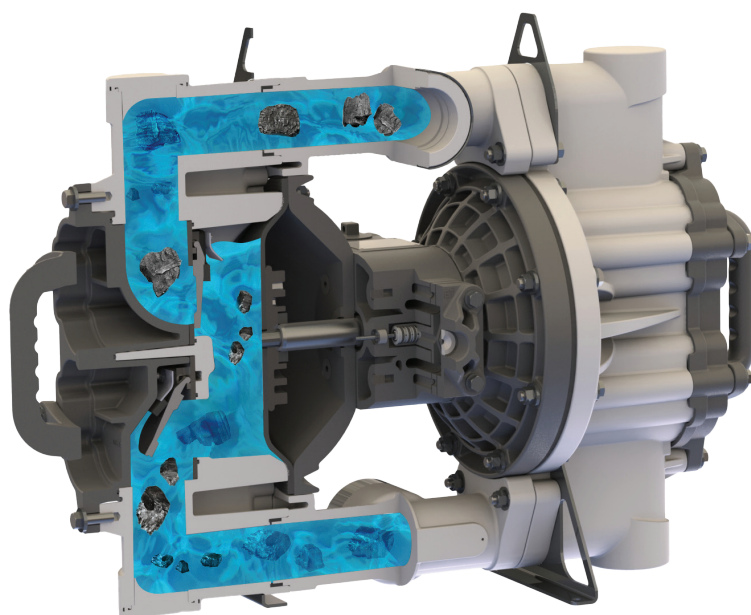


TYPICAL TOP DISCHARGE BALL VALVE PUMP

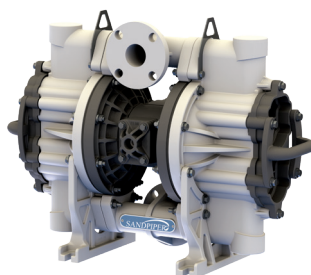
Large solids cannot pass through pump, affecting operation

FLAP VALVE MINING PUMPS- NON-METALLIC

HEAVY DUTY AODD VALVE PUMPS FOR MINING APPLICATIONS



SPB20 2" (50mm)
NPT (F) / BSPT (F)



SPB20 2" (50mm)
ANSI / DIN Flange

FEATURES & BENEFITS

- ✓ **Lightweight & Durable**
The non-metallic, lightweight design makes it easily portable at 58 lbs. (27kg).
- ✓ **Optimum Solids Handling**
Flaps open wide to allow solids and slurry to pass freely, delivering excellent solids passage, flow and efficiency.
- ✓ **Rugged Design**
Stainless steel seats prevent abrasion when pumping solids laden fluids.
- ✓ **Ergonomic Handle**
Lifting handles come standard, allowing for easy pump transport; handles can be rotated 90 degrees for proper ergonomics, depending on desired use.

FOCUSED APPLICATIONS

- Acidic Dewatering
- Portable / Mobile Pump Service

SPECIFICATIONS	SIGNATURE CONFIGURATIONS	HEAVY DUTY FLAP VALVE (NON-METALLIC)
	Suction / Discharge Port Sizes	2"
	Max Flow Rate Per Minute	170 Gal. (644 L)
	Max Discharge Head	231' (70m) of water @ 100 psi
	Max Dry Prime	24' (7m)
	Max Solids Handling (Semi Solid)	1.8" (45 mm)
	Wetted Materials (Body)	PP

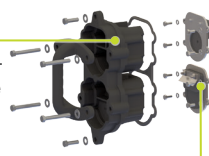
EASE OF MAINTENANCE NON-METALLIC PUMPS

Quick Access to Serviceable Components

To help increase productivity and reduce downtime.

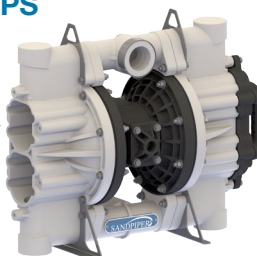
Remove Clean-Out Cap

By simply removing six bolts securing the clean-out cap in place, it allows access to clear simple clogs without disassembling the entire pump.



Flap Check Valves

With the clean-out cap removed, the flap valves can be inspected and / or replaced as needed. Four bolts hold the modular flap valves in place for quick maintenance and repair.



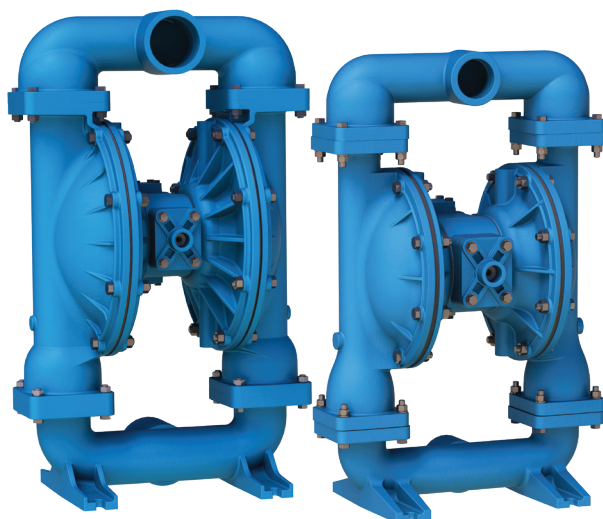
Light Weight /
Portable



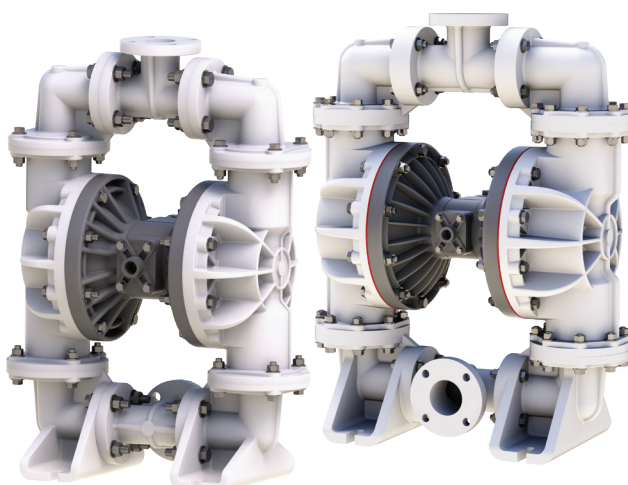
Ease of Inspection /
Service

BALL VALVE MINING PUMPS

STANDARD DUTY BALL (SDB) VALVE PUMPS



S20 2" (50mm) Metallic S30 3" (76 mm)



S20 2" (50mm) Non-Metallic S30 3" (76mm)



Visit [SANDPIPERPUMP.COM/ESADSVideos](https://sandpiperpump.com/esadsvideo) to see how easy the ESADS air valve makes maintaining the 2" Non-Metallic Flap Valve.

FEATURES & BENEFITS

- ✓ **Class Leading Flow and Efficiency**
Evolution Series deliver best flows and air efficiency.
- ✓ **Lightweight & Portable**
2" S20 Aluminum only 69 lbs. (31 kg).
- ✓ **ESADS+Plus Air Valve**
Externally Serviceable Air Distribution System.
- ✓ **Safety Certifications Available**



FOCUSED APPLICATIONS

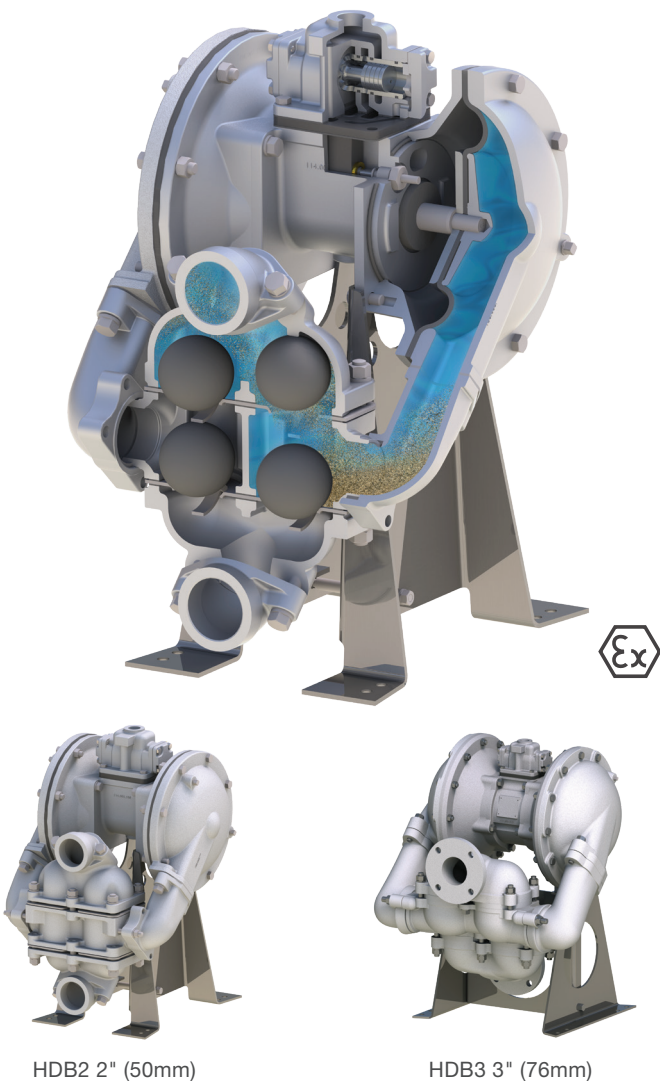
- Dewatering
- Ore Processing (Leaching / Winnowing)
- Equipment Maintenance
- Filter / Belt Press Feed

SPECIFICATIONS	SIGNATURE CONFIGURATIONS	STANDARD DUTY BALL VALVE (METALLIC)
	Suction / Discharge Port Sizes	1/2" through 3"
	Max Flow Rate Per Minute	285 Gal. (1,079 L)
	Max Discharge Head	289' (88m) of water @ 125 psi
	Max Dry Prime	20' (6.8m)
	Max Solids Handling (Semi Solid)	.38" (10 mm)
	Wetted Materials (Body)	AL, CI, SS, H

SPECIFICATIONS	SIGNATURE CONFIGURATIONS	STANDARD DUTY BALL VALVE (NON-METALLIC)
	Suction / Discharge Port Sizes	1/4" through 3"
	Max Flow Rate Per Minute	280 Gal. (1,061L)
	Max Discharge Head	231' (70m) of water @ 100 psi
	Max Dry Prime	20' (6.8m)
	Max Solids Handling (Semi Solid)	.75" (19 mm)
	Wetted Materials (Body)	PP, K

BALL VALVE MINING PUMPS

HEAVY DUTY BALL (HDB) VALVE PUMPS



**SANDPIPER
HEAVY DUTY BALL VALVE PUMP**
Settling solids easily pass through pump.

VS

**TYPICAL
TOP DISCHARGE BALL VALVE PUMP**
Settling solids collect inside pump,
causing damage & affecting operation.

FEATURES & BENEFITS

- Down Ported Option**
 For fluids containing settling solids. Solids collect in the elbow instead of the diaphragm chamber and are discharged, limiting wear on the diaphragm and components.
- Weighted Check Valve Balls**
 Feature a metallic core that is 30-60% heavier than a solid rubber check ball, helping to improve performance with viscous fluids.
- Diaphragm Wear Pads**
 Extend diaphragm life by reducing the frictional stresses associated with the outer diaphragm plate.
- Thick Manifold and Chamber Walls**
 Greater wear resistance when pumping solids and solid laden slurries, providing extended service life.
- Large Flow Area**
 Reduces fluid velocity through pump, which often lessens wear.

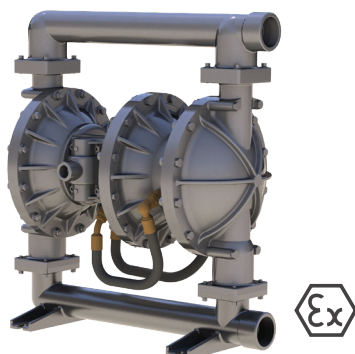
FOCUSED APPLICATIONS

- Flotation Cell Sampling
- Filter / Belt Press Feed
- Concrete transfer

SPECIFICATIONS	SIGNATURE CONFIGURATIONS	HEAVY DUTY BALL VALVE (METALLIC)
	Suction / Discharge Port Sizes	1" through 4"
	Max Flow Rate Per Minute	300 Gal. (1,136 L)
	Max Discharge Head	289' (88m) of water @ 125 psi
	Max Dry Prime	20' (6.8m)
	Max Solids Handling (Semi Solid)	88" (22 mm)
	Wetted Materials (Body)	AL, CI, SS

SPECIALTY PUMPS

SANDPIPER AODD HIGH-PRESSURE PUMP - 2" (50 MM)



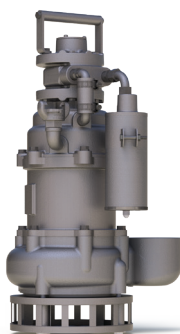
FEATURES & BENEFITS

- ✓ Pressures up to 232 psi (16 bar), flow rates up to 92 gpm (348 lpm).
- ✓ Material option available with aluminum or stainless-steel wetted construction.
- ✓ Robust stainless steel air valve standard.

FOCUSED APPLICATIONS

- Filter / Belt press feed
- Pumping Long distances / up levels
- Pumping viscous products

AIR POWERED SLUDGEMASTER™ CENTRIFUGAL PUMP



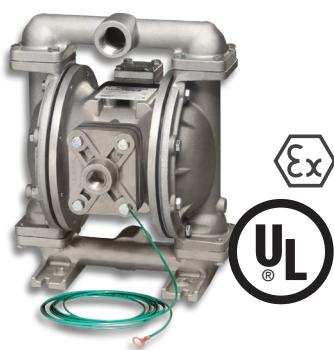
FEATURES & BENEFITS

- ✓ Fully submersible design for fast and complete dewatering.
- ✓ Lightweight / portable - 59 lbs. (27 kg).
- ✓ Self-priming and can run dry without damage.
- ✓ Robust cast iron open impeller to handle abrasive solids laden fluids.
- ✓ High capacity flows with low head (300 gpm (1,136 lpm)).

FOCUSED APPLICATIONS

- Belt head dewatering
- Sump evacuation

UL-LISTED AODD PUMP



FEATURES & BENEFITS

- ✓ Solid all aluminum construction.
- ✓ Safety First ATEX and UL approved fully grounded design to prevent static discharge for safe flammable fluid transfer.

FOCUSED APPLICATIONS

- Vehicle maintenance fluids transfer - Hydraulic fluid, lubricants, anti-freeze, diesel fuel, and other flammable liquids safely.

SANDPIPER®

Warren Rupp, Inc.
A Unit of IDEX Corporation
800 North Main Street
Mansfield, OH 44902 USA

Phone: 419.524.8388
Fax: 419.522.7867
SANDPIPERPUMP.COM



Visit www.sandpiperpump.com and click on "Find a distributor" to contact your local distributor to place your order

©Copyright 2022 Warren Rupp, Inc. All Rights Reserved.