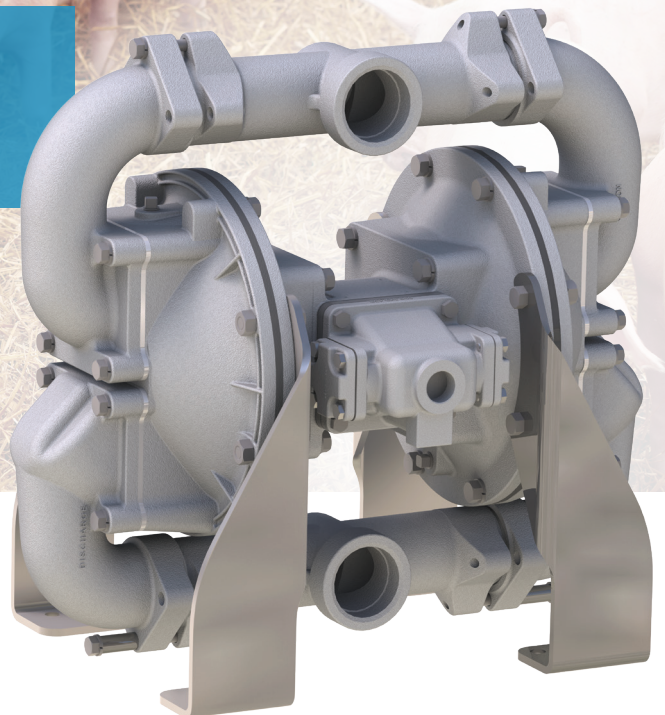


AODD MEAT AND POULTRY PROCESSING PUMPS

Blood Pump: Air Operated Double-Diaphragm Pumps Specifically Designed for Pumping Blood, Organs, Fats, and Waste Products



The SANDPIPER Blood Pump has been the workhorse of the meat and poultry processing industries for over 50 years



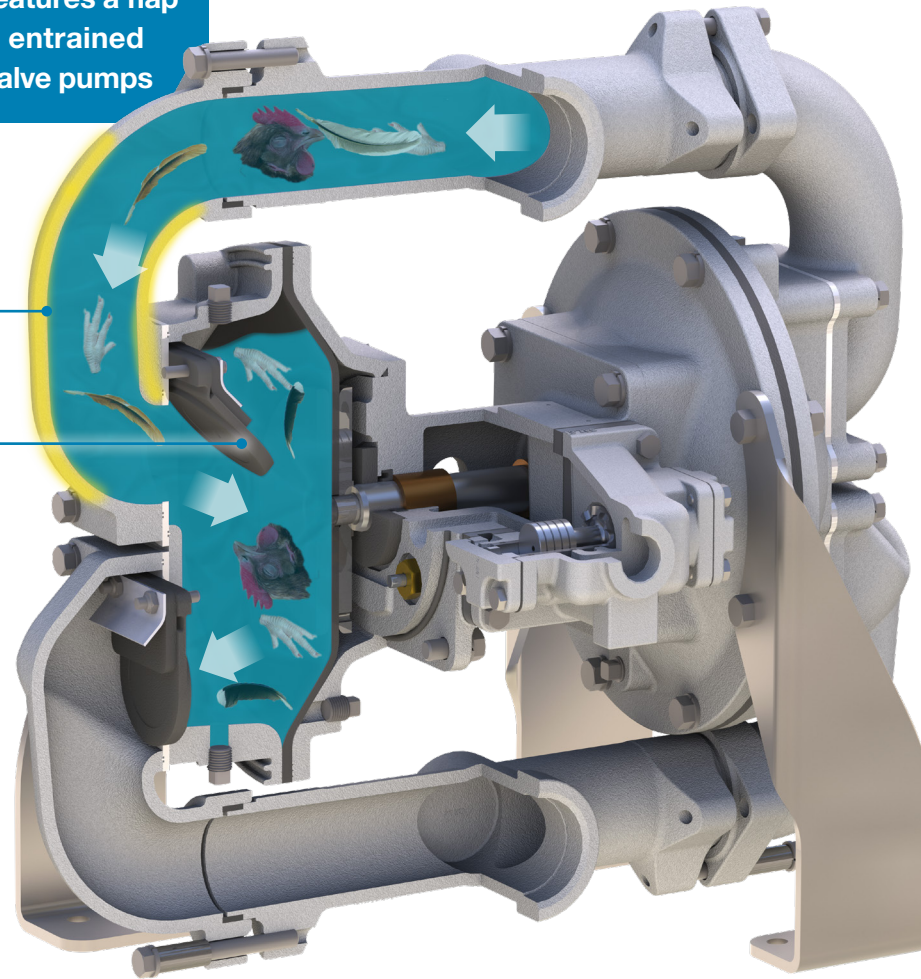
**WARREN
RUPP, INC.**

SANDPIPER®
A WARREN RUPP, INC. BRAND

SANDPIPER's Blood Pump features a flap valve design that can pump entrained solids that clog typical ball valve pumps

Thick walls

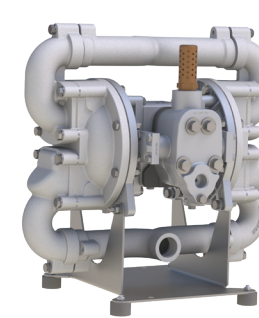
Flaps allows solids as large as the pipes to pass through



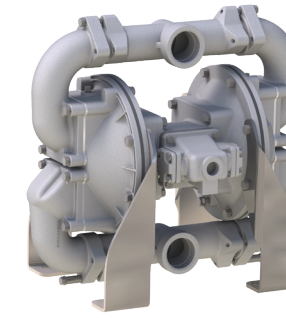
Many Steps in your Process – One Pump

Sandpiper Blood Pump

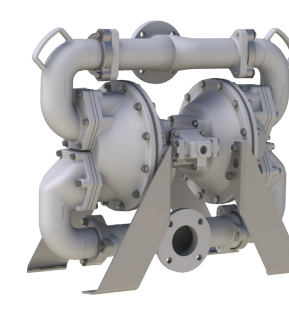
- Thick, robust chambers that withstand abrasive **blood** flow
- Flap Check valve design that allows passage of small to large solids
 - **Feathers**
 - **Pig Hair**
 - **Casing room waste**
 - **Organs**
- Unique top-suction / bottom discharge porting that prevents solids from collecting inside
- Optimized performance and efficiency. Ideal for process **water & wastewater** management where pumps run continuously as well as **Tallow** and **Suet** transfer
 - Highest flow capacity 1", 2" and 3" pumps available in the industry
 - Lowest air consumption in its class
 - No reduction in performance as the pump ages
 - Minimal flow velocity changes for superior handling of thick, viscous fluids
- Easiest service-ability with SANDPIPER exclusive ESADS+ Air Distribution System allows for access to both the pilot and main air valve without removing the pump from service. Other AODD pumps require complete pump tear-down to access pilot valve



HDF1 Metallic
Max Flow: 70 GPM
Max Solids Size : 1 inch



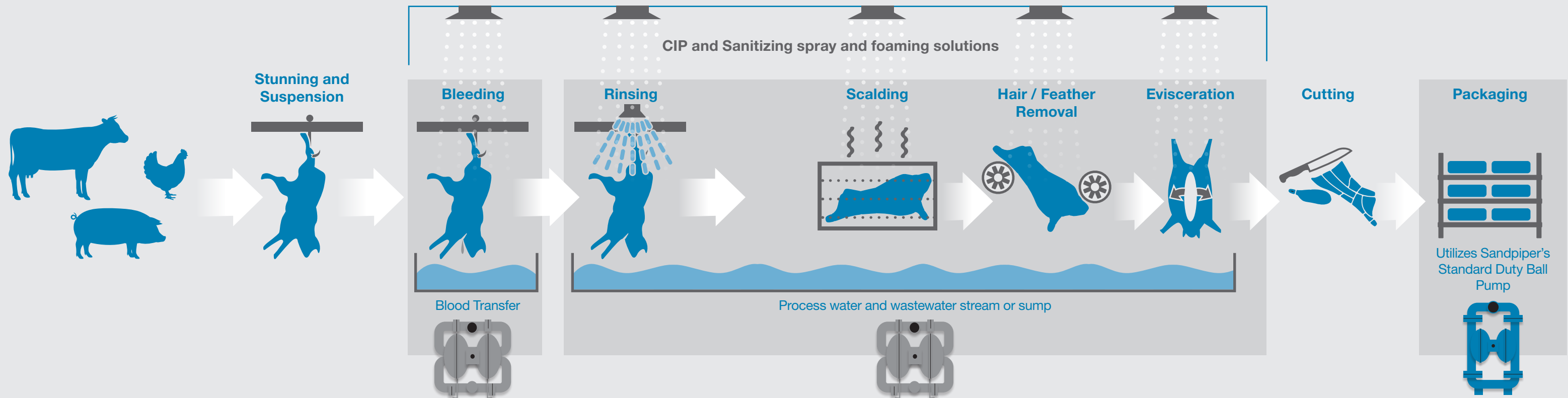
HDF2 Metallic
Max Flow: 208 GPM
Max Solid Size: 1.8 inch



HDF3 Metallic
Max Flow: 310 GPM
Max Solids Size: 3 inch



HD20F Non-Metallic
Max Flow: 150 GPM
Max Solid Size: 1.8 inch
ONLY 53 POUNDS

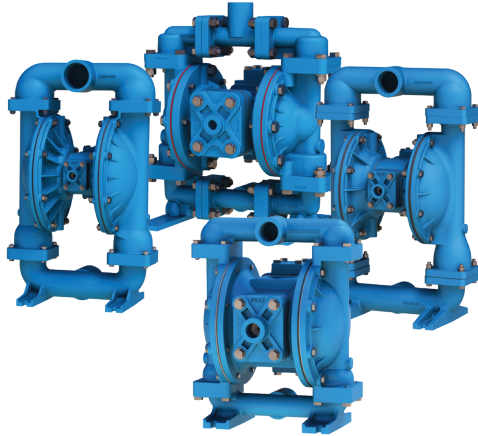


Did You Know...

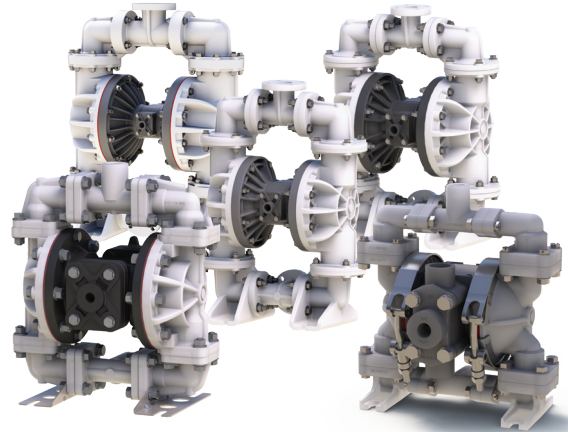
... we supply the most efficient, highest flow capacity ball valve AODD pumps?

Versatile and mobile – these pumps are equipped to handle abrasive fluids to small suspended solids as well as aggressive and CIP chemicals. Our 2" and 3" pumps offer best-in-class flow rates and the lowest air consumption

Standard Duty Metallic



Standard Duty Plastic

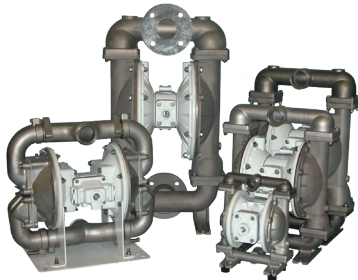


... we supply the most complete line of Sanitary AODD pumps?

We understand that many of your meat and poultry processes require FDA Compliant pumps

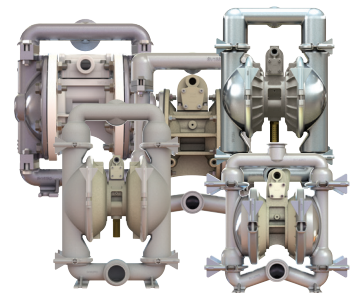
T-Series FDA Compliant Pump Features

- Available in 1"–3" sizes
- All Bolted Construction
- Stainless Steel Wetted
- White Epoxy Coated Aluminum Non-Wetted (Stainless Steel Available 1-1/2"–3")
- Sanitary Clamp Connections
- PTFE, FDA Nitrile, FDA Santoprene Diaphragms



F-Series FDA Compliant Pump Features

- 1/2"–1" All Bolted Construction
- 1-1/2"–3" Clamped Construction
- Electropolished Stainless Steel Wetted
- Nickel Plated Aluminum Non-Wetted (Polypropylene & Stainless Steel Available Certain Models)
- Sanitary Clamp Connections
- PTFE, FDA Hytrel, FDA Santoprene Diaphragms



SANDPIPER®

Warren Rupp, Inc.
A Unit of IDEX Corporation
800 North Main Street
Mansfield, OH 44902 USA

Phone: 419.524.8388
Fax: 419.522.7867
SANDPIPERPUMP.COM



©Copyright 2020 Warren Rupp, Inc. All Rights Reserved.

Visit www.sandpiperpump.com and click on "Find a distributor" to contact your local distributor to place your order